

# Call Park Feature using Cordless DECT W60B Phones

The following steps can be used to place and retrieve calls using the Enhance Call Park Feature using the Cordless DECT W60B phones.

## Place a call on Call Park

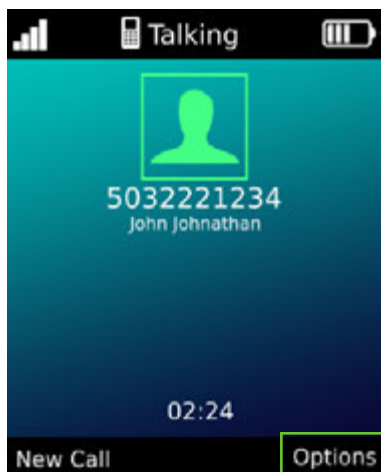
1. While on a call press the ok button to wake up the screen.
2. Once visible select the Options key on the bottom right.
3. Use the up-arrow key to quickly navigate down to the call park feature
4. Select the Call Park option by pressing the OK button.
5. Enter the Call Park Orbit. (701-704)

The default Call Park Orbit setup is as follows:

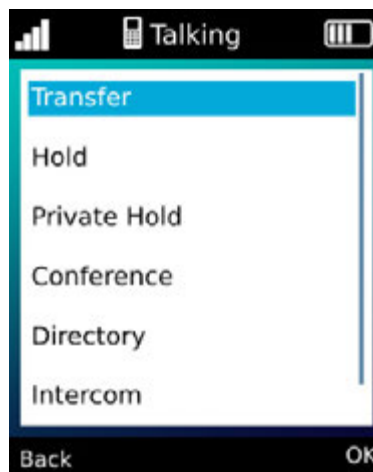
Park 1	Orbit 701
Park 2	Orbit 702
Park 3	Orbit 703
Park 4	Orbit 704

6. Press the Call Park Button in the lower right of the screen to place the call in the Call Park Orbit to complete the Call Park procedure.

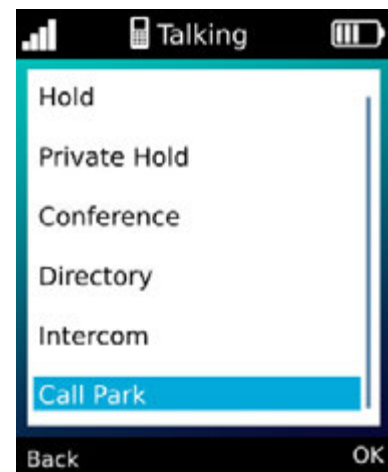
## Place a call on Call Park - Visual Guide



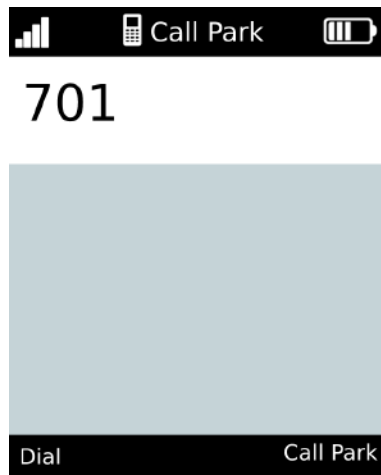
Step 1 & Step 2



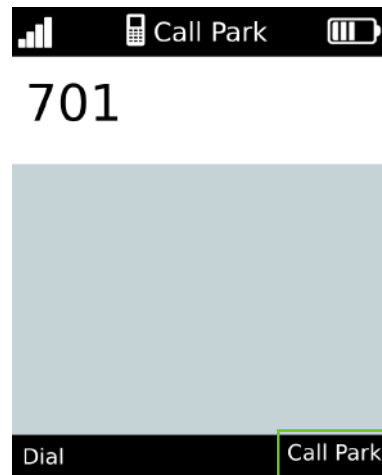
Step 3



Step 4



Step 5

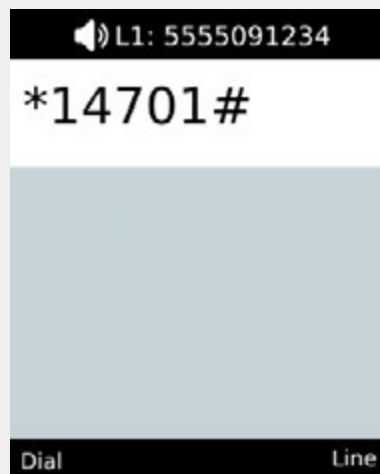


Step 6

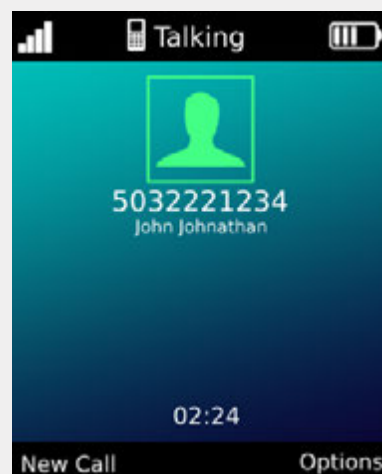
## Retrieve a Parked Call

1. Dial \*14 plus the Call Park Orbit (701-704), followed by #.
2. This will retrieve a call that was previously parked on the specified orbit.

## Retrieve a Parked Call



Step 1



Step 2